

Catalogue des bâtiments de Type A de Rodd

- inventaire archéologique satellitaire de la plaine de l'Ighazer -



Introduction

Retenons de la description de Rodd : « Les maisons les plus anciennes, que j'appellerai le «type A», sont de plan rectangulaire et ont deux pièces, une plus grande avec deux ou trois portes extérieures, et une intérieure avec une porte dans la cloison et aucune porte extérieure. Les maisons de ce type et la plupart des maisons vues en Air sont orientées dans la même direction, à savoir, à quelques degrés du nord et du sud, avec la plus petite pièce à l'extrémité nord » (Rodd 1926).

548 bâtiments de type A ont été catalogués dans notre base de données. Sont notées les caractéristiques physiques, longueur, largeur et orientation ainsi que le nombre de porte. Longueur et largeur sont prises sur les bords extérieurs des ruines et doivent donc être considérés plus comme des maxima. L'orientation est prise sur l'axe longitudinal du bâtiment.

195 sites contiennent au moins 1 bâtiment de type A, dont la répartition est essentiellement méridionale. C'est un type de bâtiment à vocation rural plus qu'urbain. Néanmoins, il ne dédaigne pas à être regroupé en hameau ou bourgade, ce que nous enseigne son indice de dispersion très faible de 0,135 prônant une grande clusterisation. En effet, on constate que sur 1/3 des sites, il y a 3 bâtiments de type A ou plus.

Le nombre de porte est très majoritairement de deux ou trois. Il n'est pas impossible d'ailleurs que dans certains cas la troisième nous échappe, selon la difficulté de lecture des images satellitaires, mais aussi selon la façon dont l'écroulement de l'édifice a pu se faire. Leur disposition est similaire à la description de Rodd.

Rodd avait noté que la petite pièce intérieure était disposée au nord, mais au vu de nos travaux, la différence d'avec un positionnement sud (60 % contre 40%), n'est pas aussi strict.

Référence :

Rodd F.R. 1926 – People of the veil, Macmillan and Co, 475 p.



LES SITES DE TYPE ASSODÉ

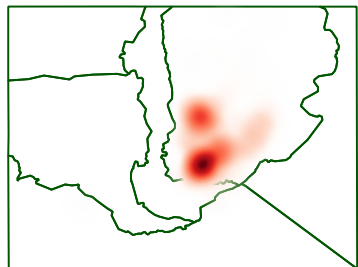
les pièces type A

Légende

zone géomorphologique

nombre de sites [195]

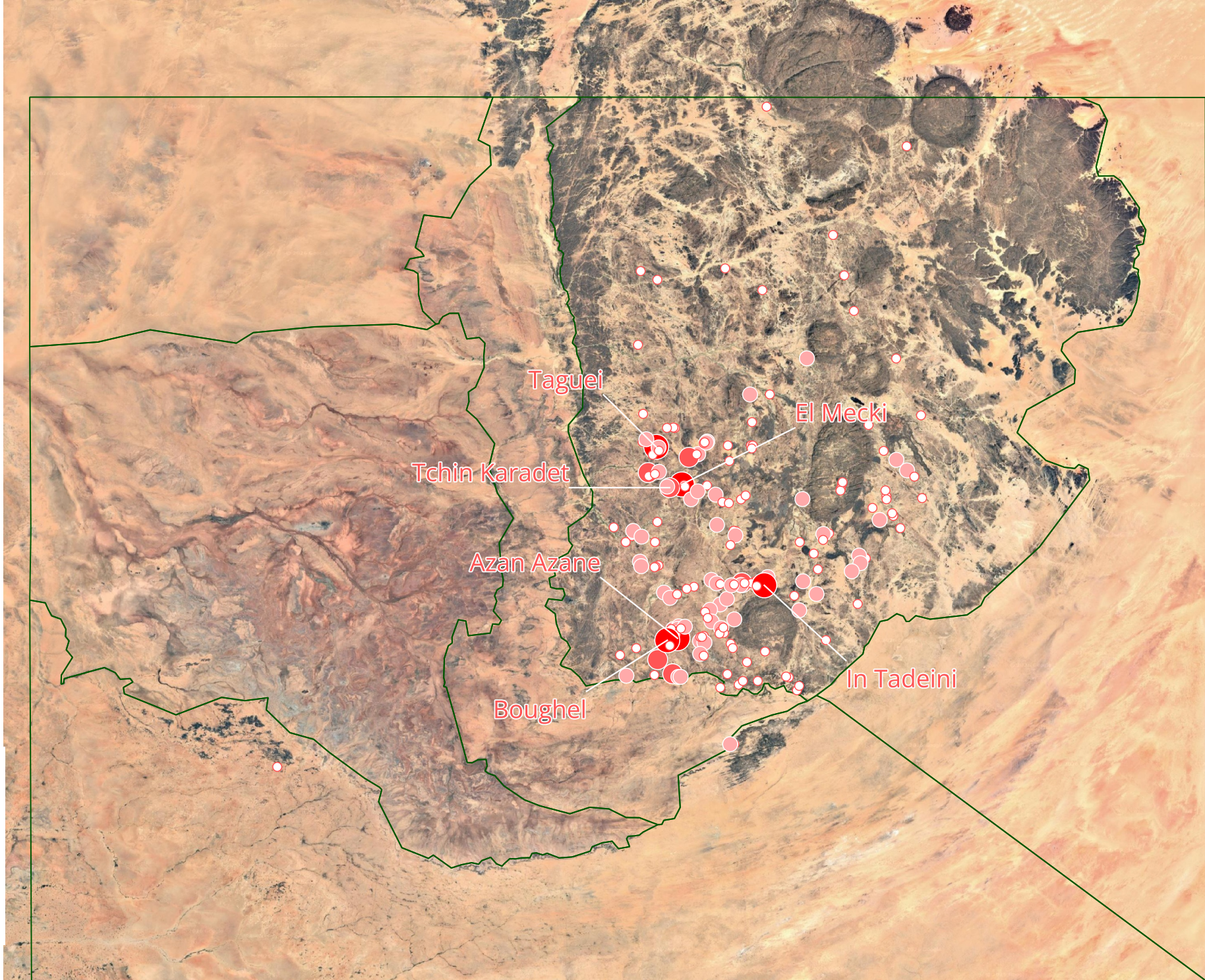
- 1 - 2 [128]
- 2 - 6 [54]
- 6 - 12 [7]
- 12 - 18 pièces [5]



0 25 50 km

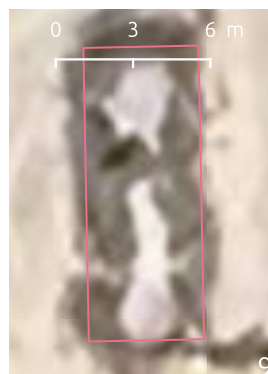
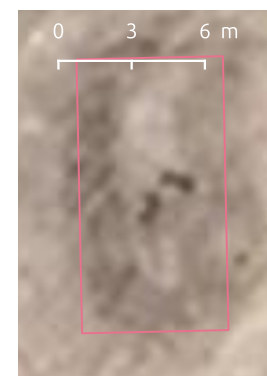
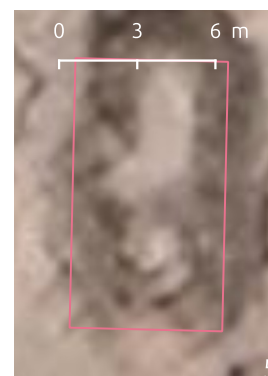
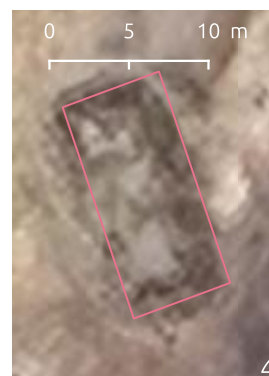


Source : inventaire archéologique satellitaire
de la plaine de l'ighazer, mai 2026.



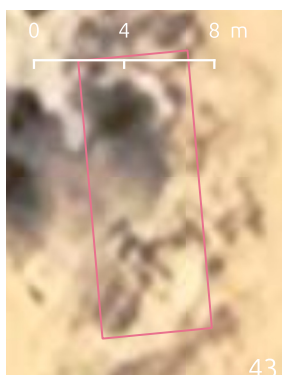
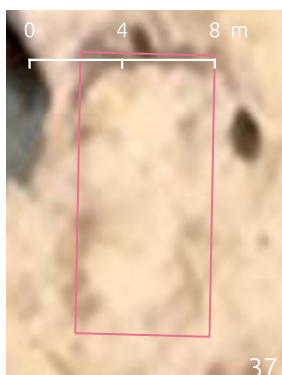
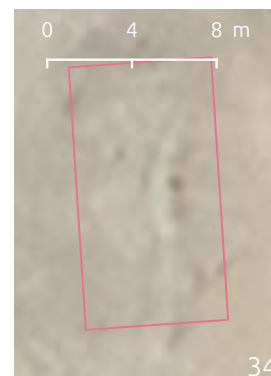
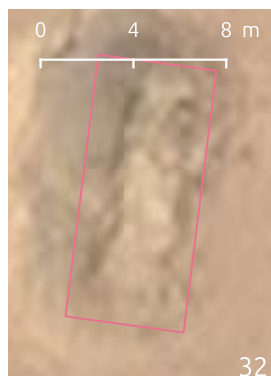
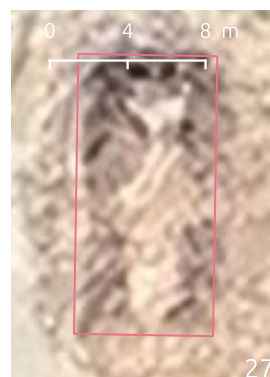
LES SITES DE TYPE ASSODÉ

les bâtiments de type A



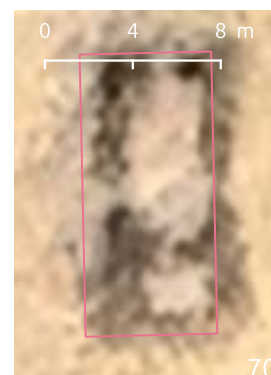
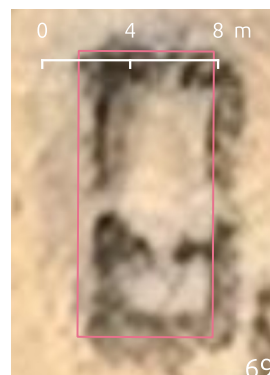
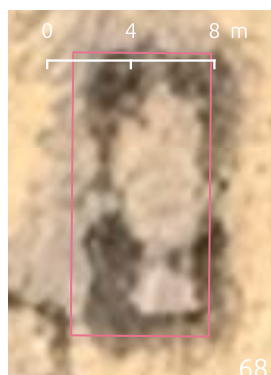
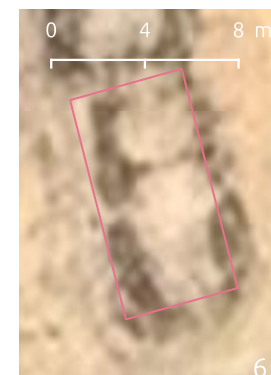
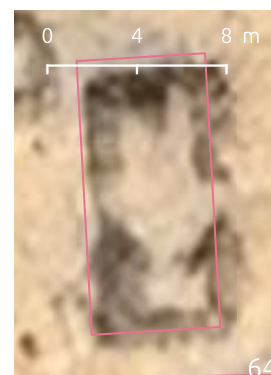
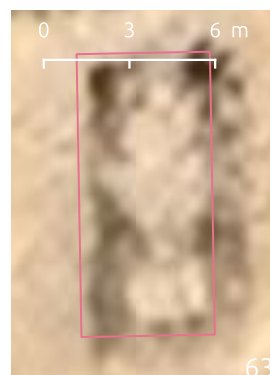
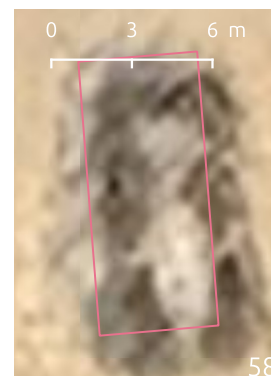
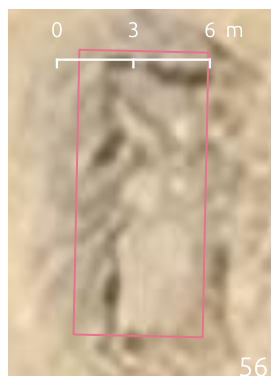
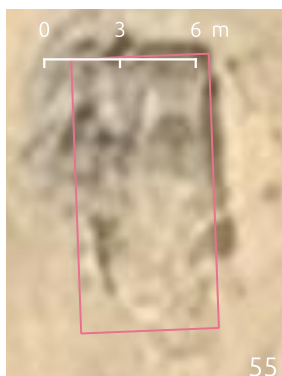
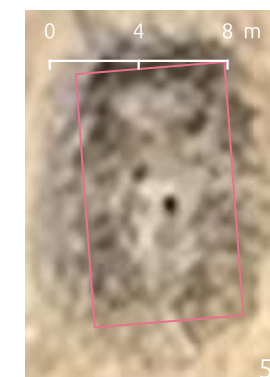
LES SITES DE TYPE ASSODÉ

les bâtiments de type A



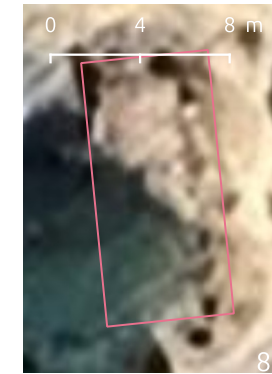
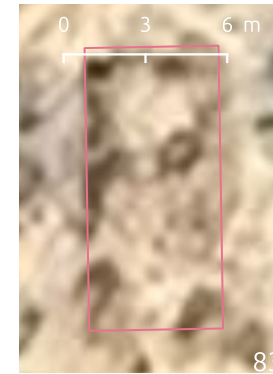
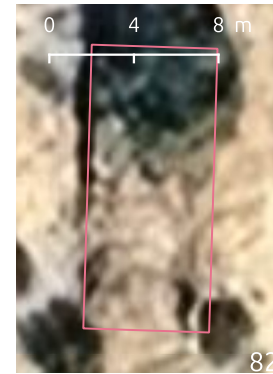
LES SITES DE TYPE ASSODÉ

les bâtiments de type A



LES SITES DE TYPE ASSODÉ

les bâtiments de type A

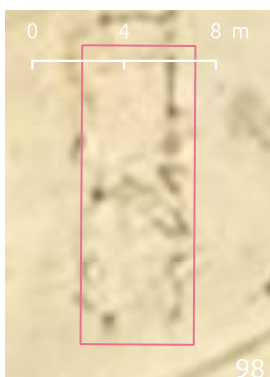


LES SITES DE TYPE ASSODÉ

les bâtiments de type A



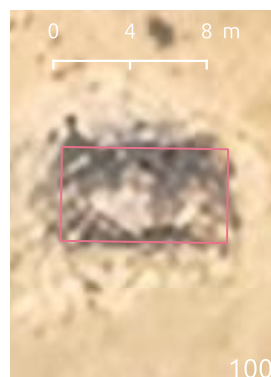
97



98



99



100



101



102



103



104



105



106



107



108



109



110



111



112



113



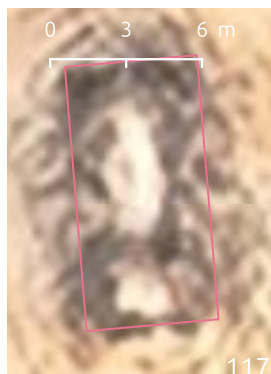
114



115



116



117



118



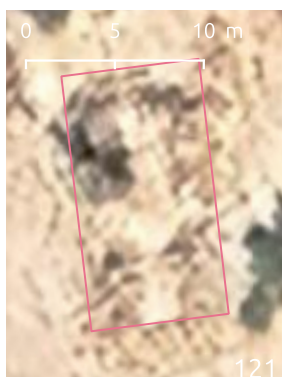
119



120

LES SITES DE TYPE ASSODÉ

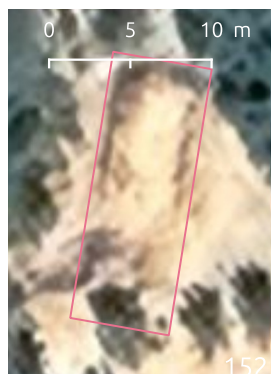
les bâtiments de type A



LES SITES DE TYPE ASSODÉ

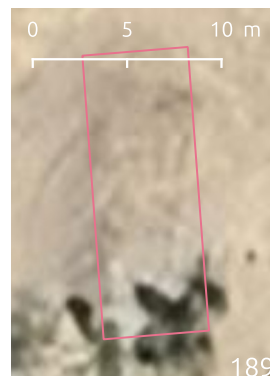


les bâtiments de type A



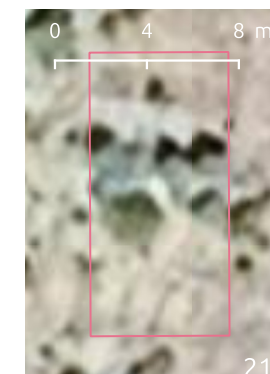
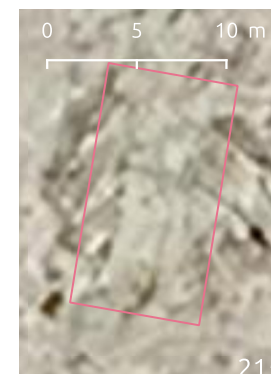
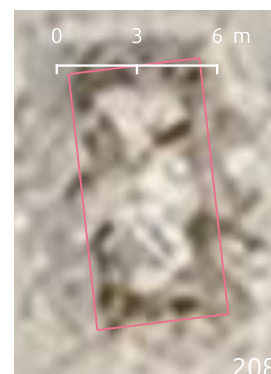
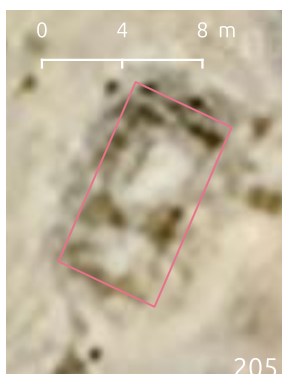
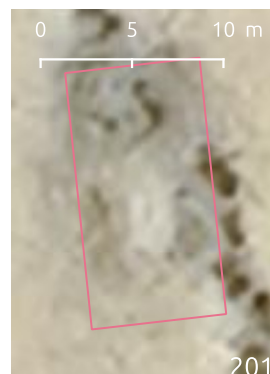
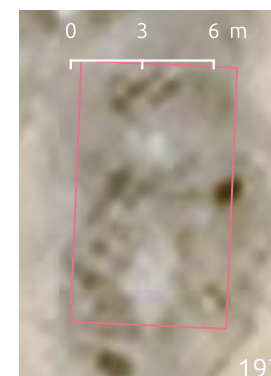
LES SITES DE TYPE ASSODÉ

les bâtiments de type A



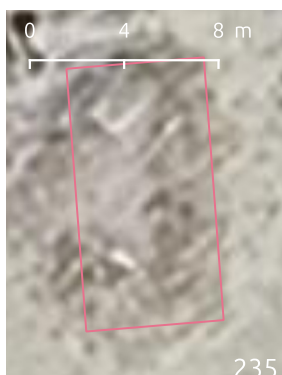
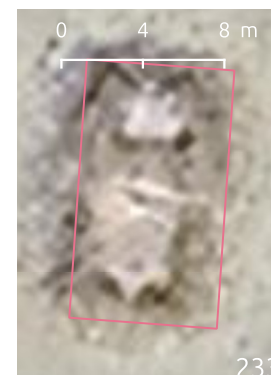
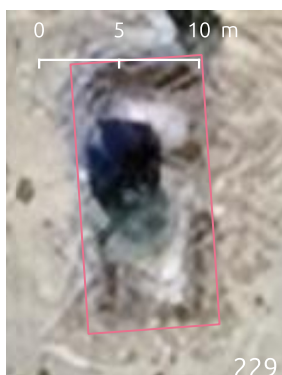
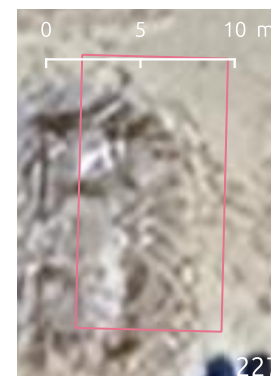
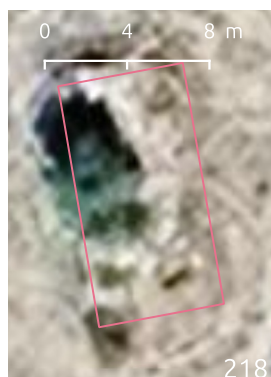
LES SITES DE TYPE ASSODÉ

les bâtiments de type A

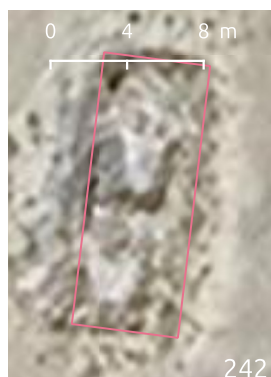


LES SITES DE TYPE ASSODÉ

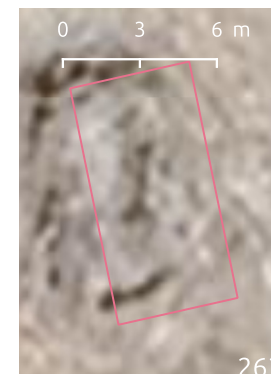
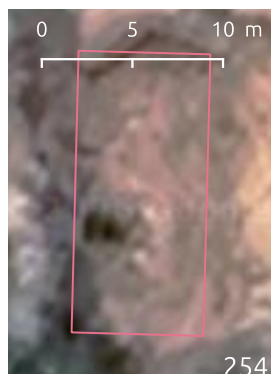
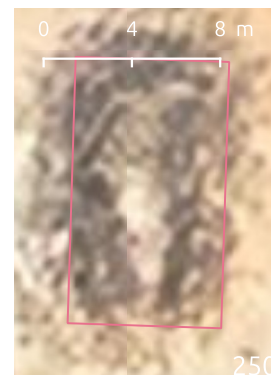
les bâtiments de type A



LES SITES DE TYPE ASSODÉ

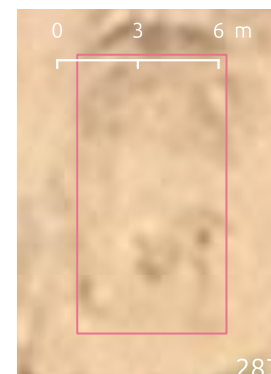
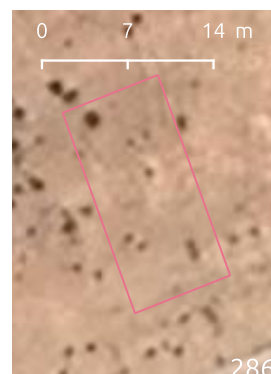
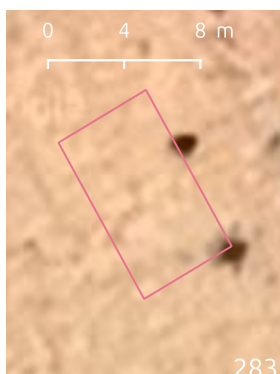


les bâtiments de type A



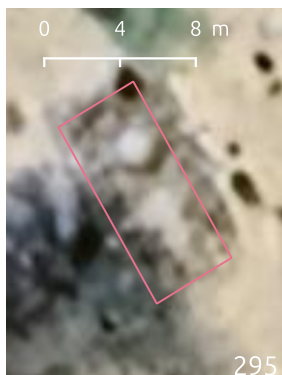
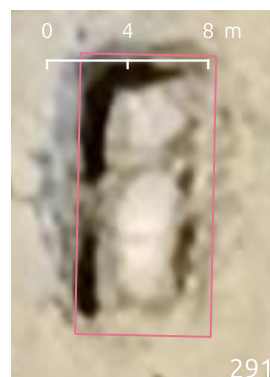
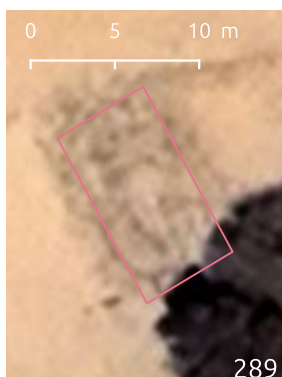
LES SITES DE TYPE ASSODÉ

les bâtiments de type A



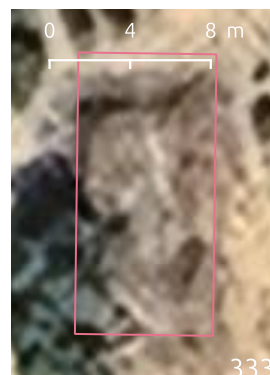
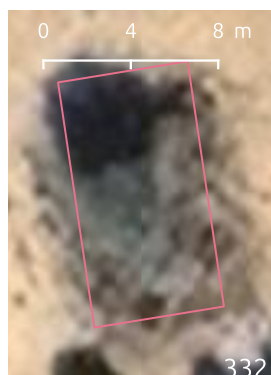
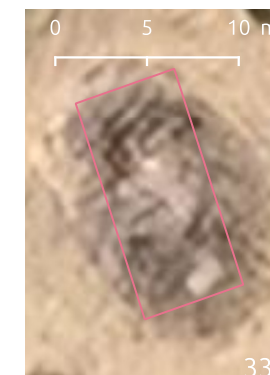
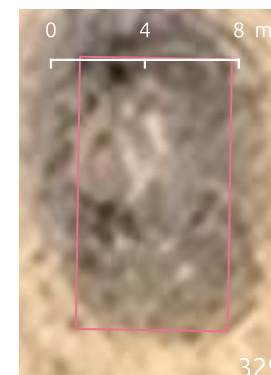
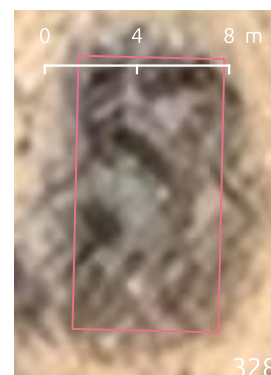
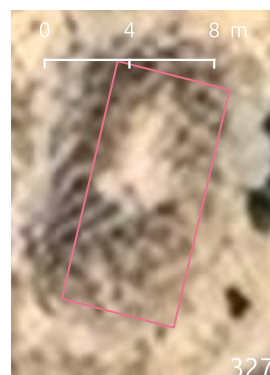
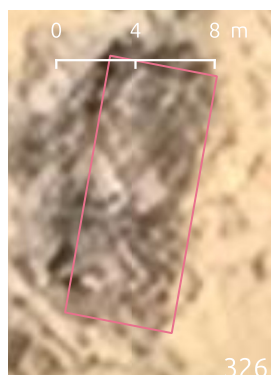
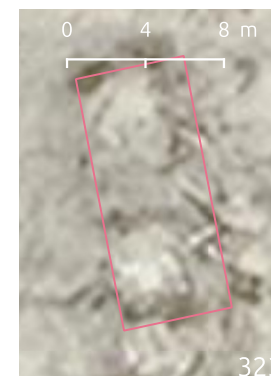
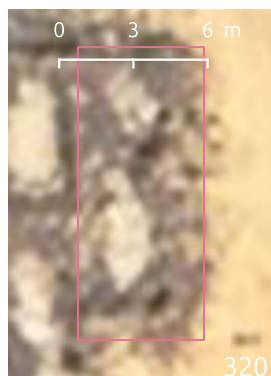
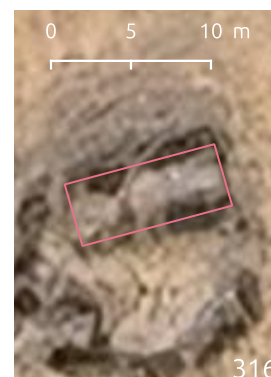
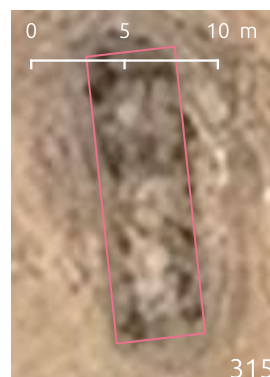
LES SITES DE TYPE ASSODÉ

les bâtiments de type A



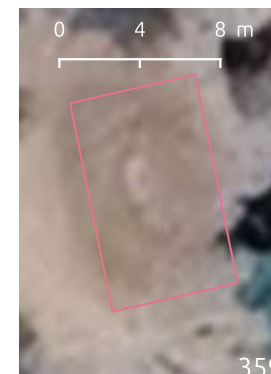
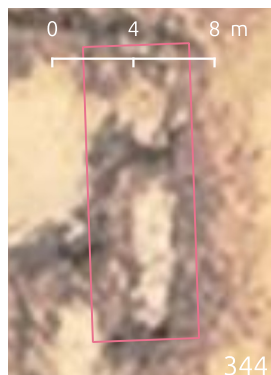
LES SITES DE TYPE ASSODÉ

les bâtiments de type A



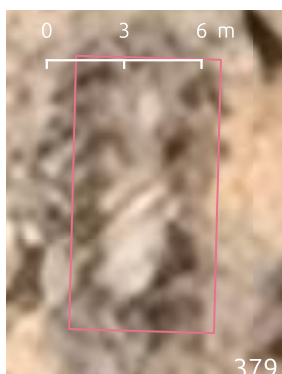
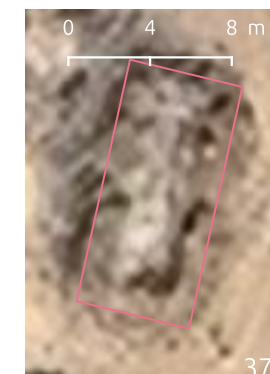
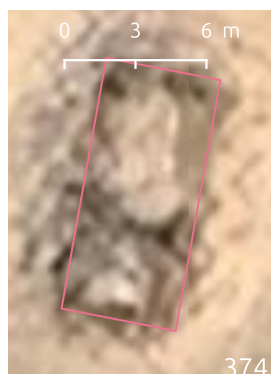
LES SITES DE TYPE ASSODÉ

les bâtiments de type A



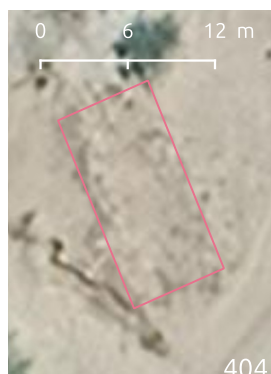
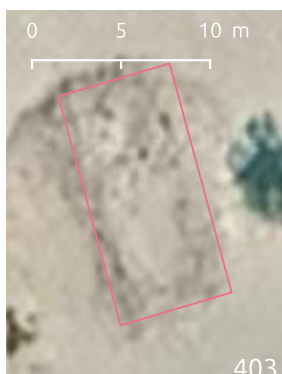
LES SITES DE TYPE ASSODÉ

les bâtiments de type A



LES SITES DE TYPE ASSODÉ

les bâtiments de type A



LES SITES DE TYPE ASSODÉ

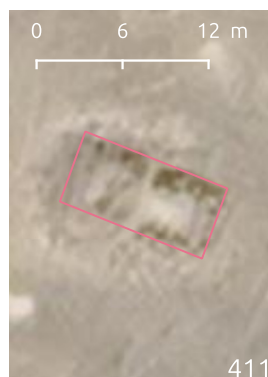
les bâtiments de type A



409



410



411



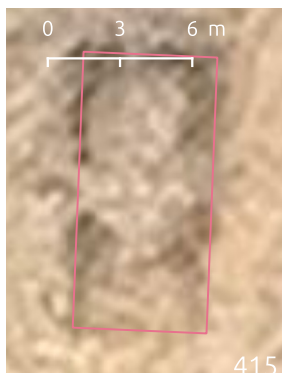
412



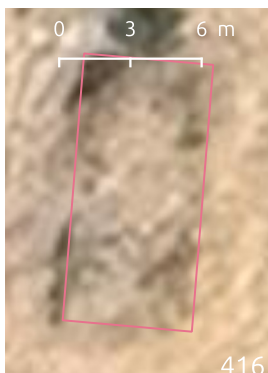
413



414



415



416



417



418



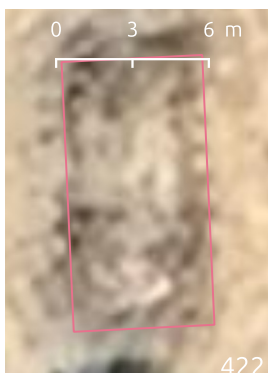
419



420



421



422



423



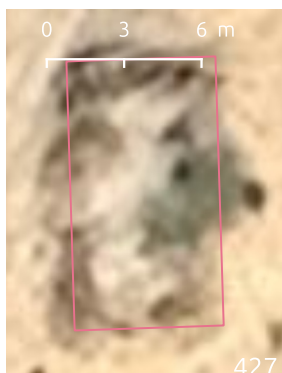
424



425



426



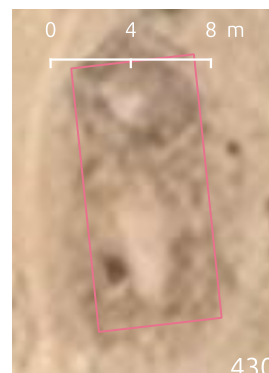
427



428



429



430



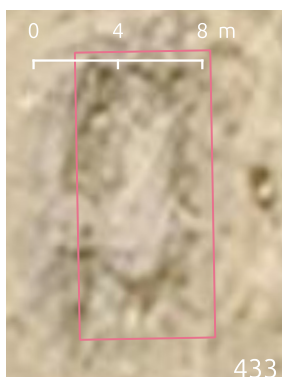
431



432

LES SITES DE TYPE ASSODÉ

les bâtiments de type A



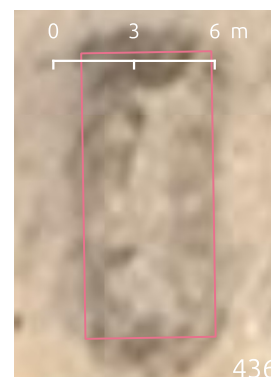
433



434



435



436



437



438



439



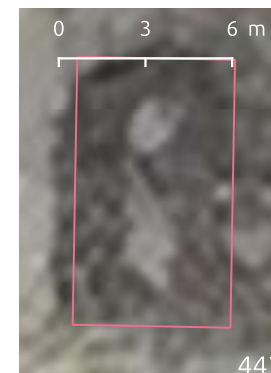
440



441



442



443



444



445



446



447



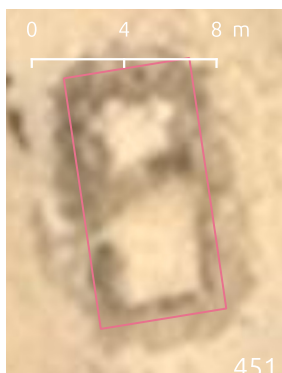
448



449



450



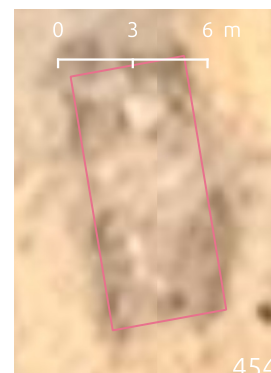
451



452



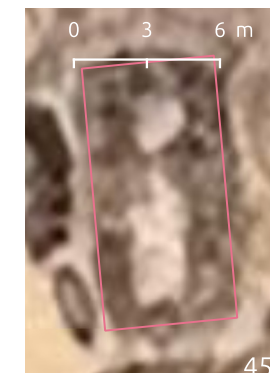
453



454



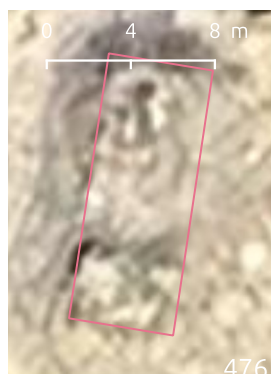
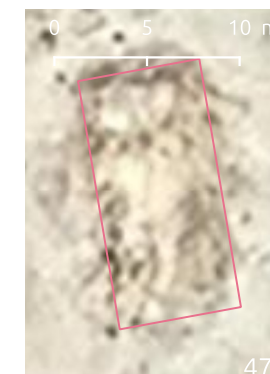
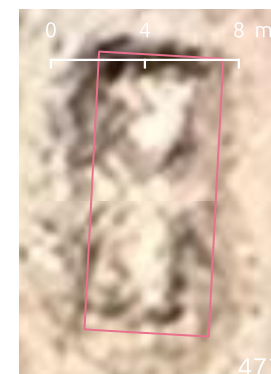
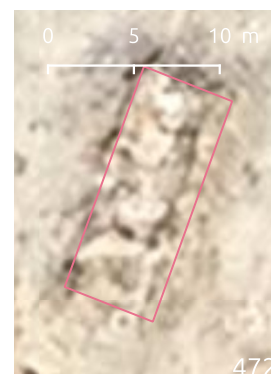
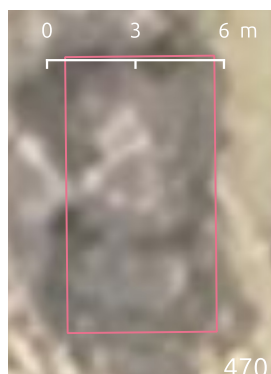
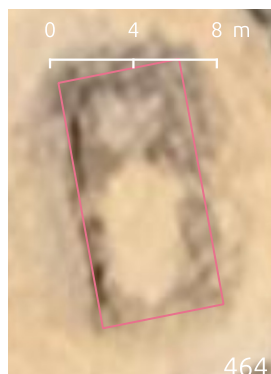
455



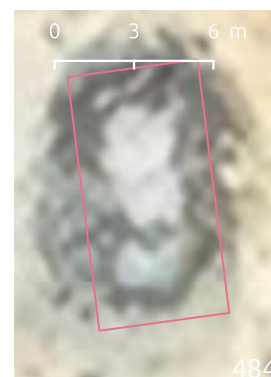
456

LES SITES DE TYPE ASSODÉ

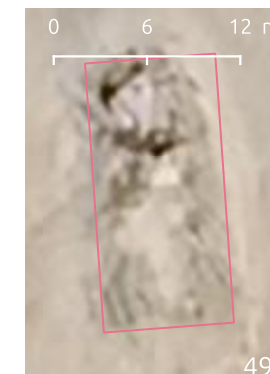
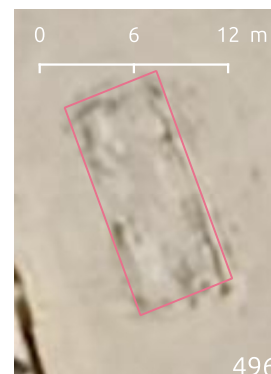
les bâtiments de type A



LES SITES DE TYPE ASSODÉ

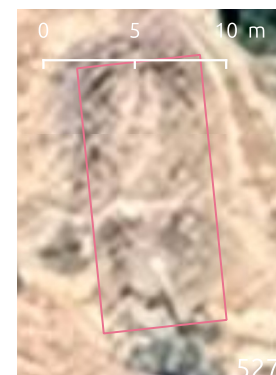
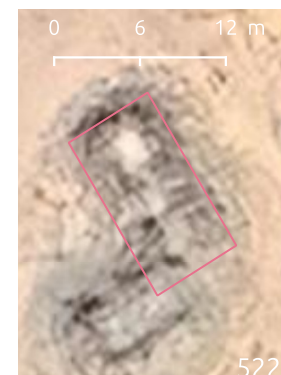
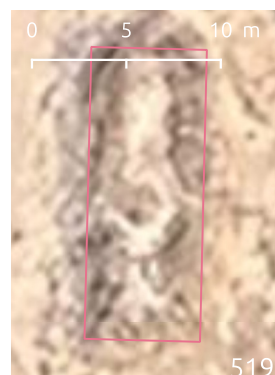
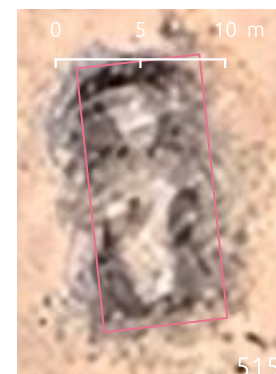
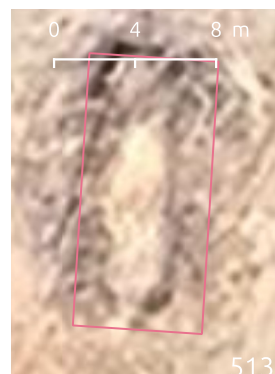
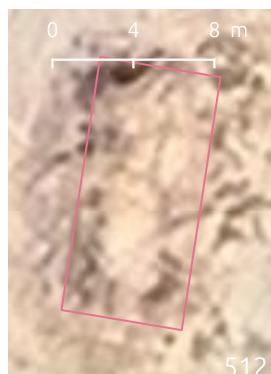


les bâtiments de type A



LES SITES DE TYPE ASSODÉ

les bâtiments de type A



LES SITES DE TYPE ASSODÉ



les bâtiments de type A

